

## Supplementary Information

# Unique morphological characteristics of mitochondrial subtypes in the heart: the effect of ischemia and ischemic preconditioning

Siavash Beikoghli Kalkhoran<sup>1,2</sup>, Peter Munro<sup>3</sup>, Fan Qiao<sup>4</sup>, Sang-Bing Ong<sup>5,6</sup>, Andrew R. Hall<sup>1,2</sup>, Hector Cabrera-Fuentes<sup>5,6,7,8</sup>, Bibhas Chakraborty<sup>4</sup>, William A. Boisvert<sup>9</sup>, Derek M. Yellon<sup>1,2</sup>, Derek J. Hausenloy<sup>1,2,5,6,10,11,\*</sup>

<sup>1</sup>Hatter Cardiovascular Institute, University College London, UK;

<sup>2</sup>National Institute of Health Research University College London Hospitals Biomedical Research Ctr., UK;

<sup>3</sup>Institute of Ophthalmology, University College London, UK;

<sup>4</sup>Centre for Quantitative Medicine, Duke-NUS Graduate Medical School, Singapore;

<sup>5</sup>Cardiovascular and Metabolic Disorders Program, Duke-National University of Singapore;

<sup>6</sup>National Heart Research Institute Singapore, National Heart Centre Singapore;

<sup>7</sup>Kazan Federal University, Department of Microbiology, Kazan, Russian Federation;

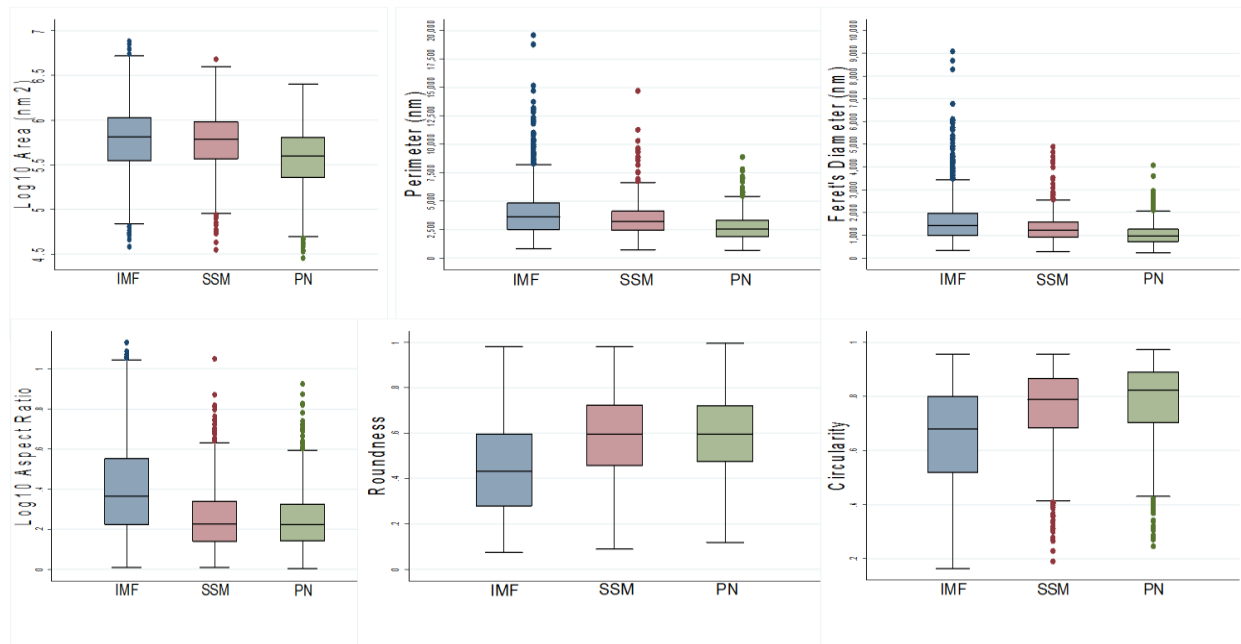
<sup>8</sup>Escuela de Ingenieria y Ciencias, Centro de Biotecnologia-FEMSA, Tecnologico de Monterrey, Mexico;

<sup>9</sup>Center for Cardiovascular Research, John A. Burns School of Medicine, University of Hawaii;

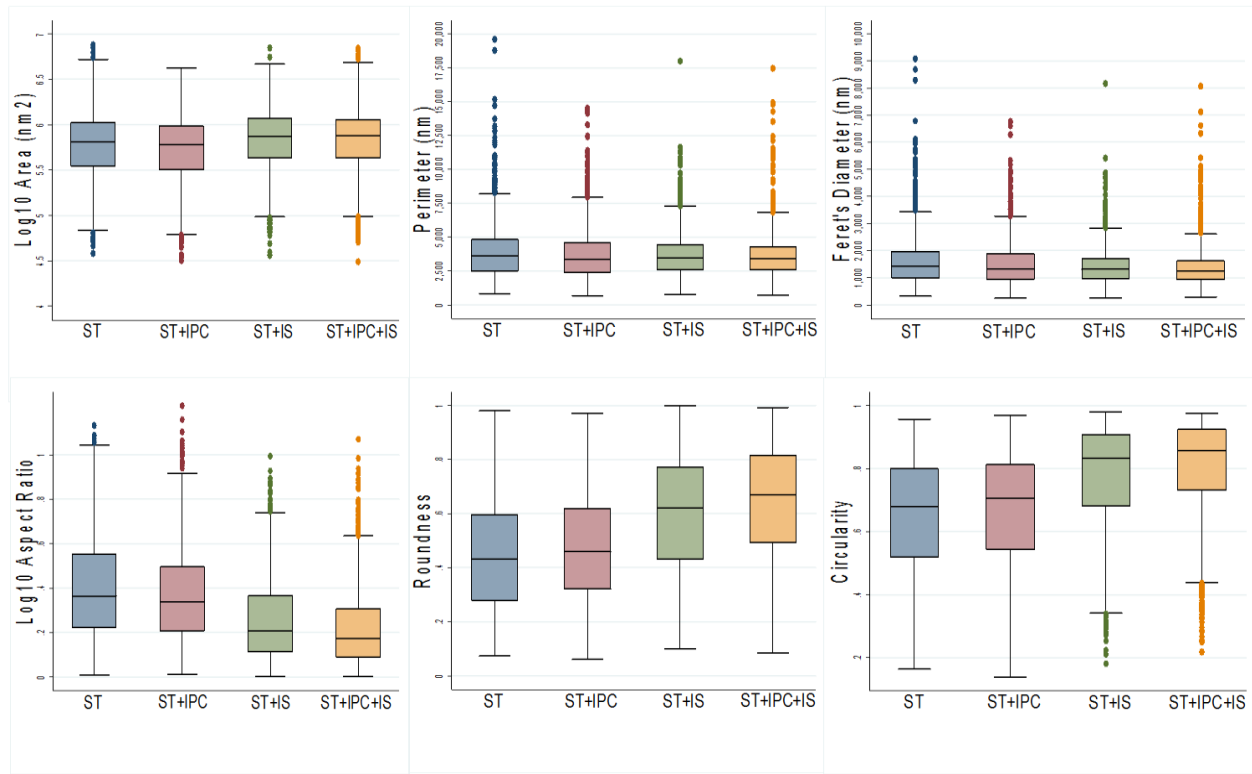
<sup>10</sup>Yong Loo Lin School of Medicine, National University Singapore, Singapore;

<sup>11</sup>Barts Heart Centre, St Bartholomew's Hospital, London, UK;

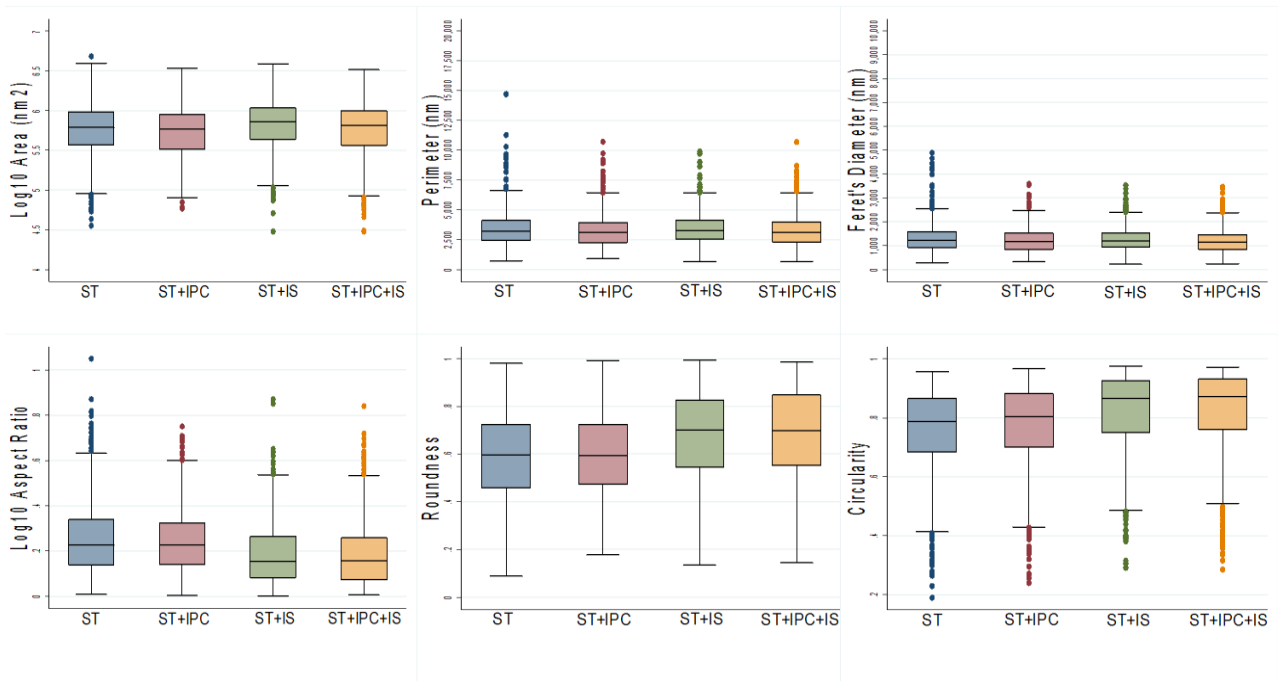
\* *Corresponding author:* Derek J Hausenloy, MD, Cardiovascular & Metabolic Diseases Program, Duke-NUS Graduate Medical School Singapore, 8 College Road, Singapore 169857; E-mail: derek.hausenloy@duke-nus.edu.sg; Phone: +65 65166719;



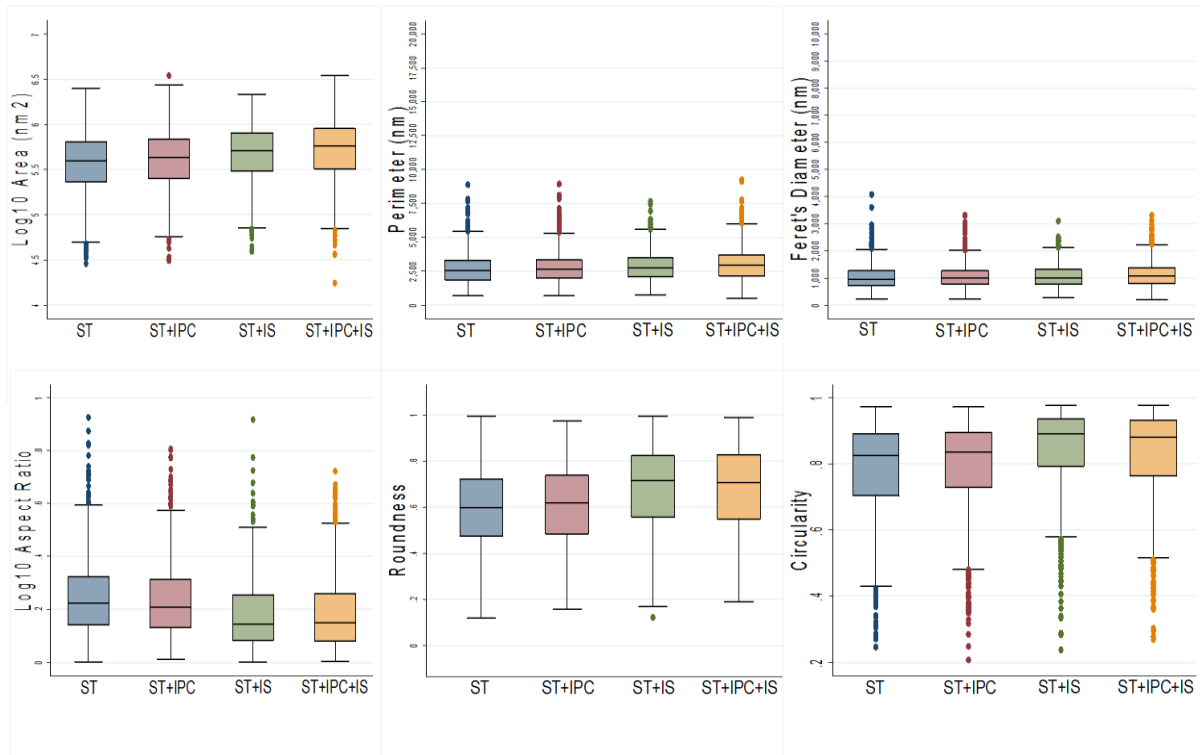
**Supplementary Figure 1. Distribution of shape descriptors of three subtypes of cardiac mitochondria.** Top left to right show the mitochondrial Log10 area, perimeter and Feret's diameter whereas bottom left to right show the aspect ratio, roundness and circularity of different mitochondria subtypes, respectively.



**Supplementary Figure 2. Distribution of shape descriptors of IMF mitochondria in different treatments.** Top left to right show the mitochondrial Log10 area, perimeter and Feret's diameter whereas bottom left to right show the aspect ratio, roundness and circularity, respectively.



**Supplementary Figure 3. Morphometric descriptors distribution of SSM mitochondria in different treatments.** Top left to right show the mitochondrial Log10 area, perimeter and Feret's diameter whereas bottom left to right show the aspect ratio, roundness and circularity, respectively.



**Supplementary Figure 4. Distribution of different parameters of PN mitochondria according to treatments.** Top left to right show the mitochondrial Log10 area, perimeter and Feret's diameter whereas bottom left to right show the aspect ratio, roundness and circularity, respectively.

DISCOVERIES is a high quality peer-reviewed, open access, online, multidisciplinary and integrative journal, publishing high impact and innovative manuscripts from all areas related to MEDICINE, BIOLOGY and CHEMISTRY; © 2017, Applied Systems