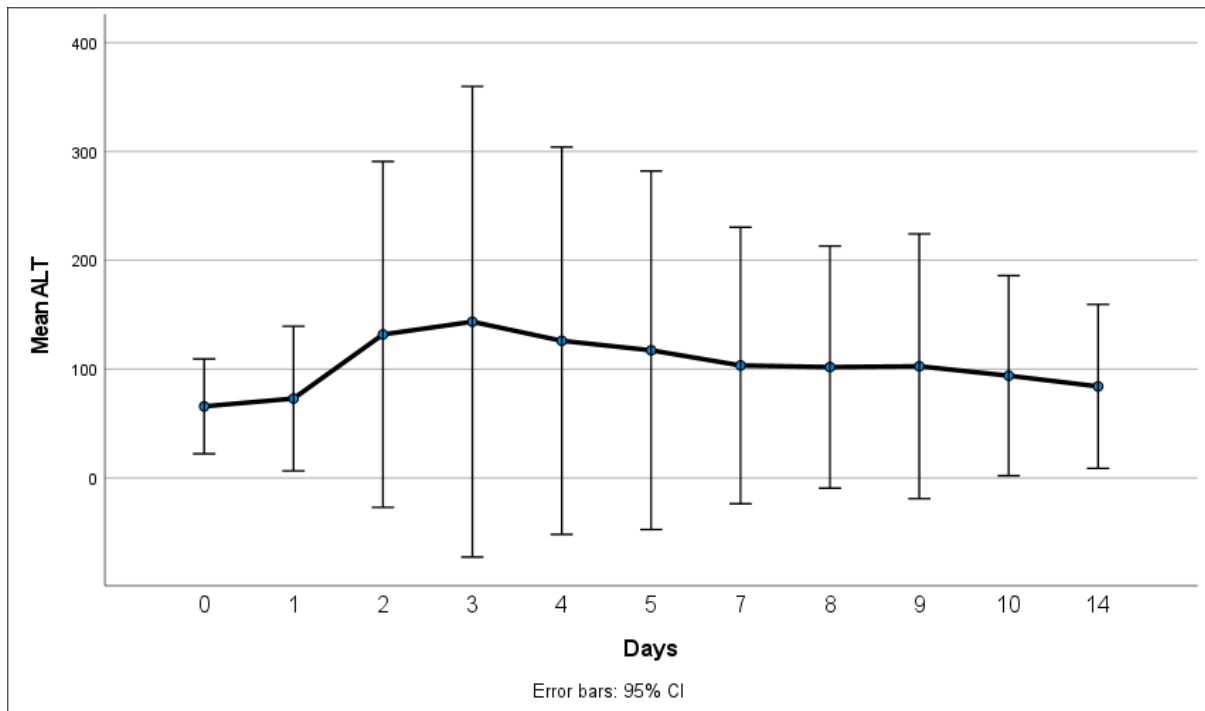
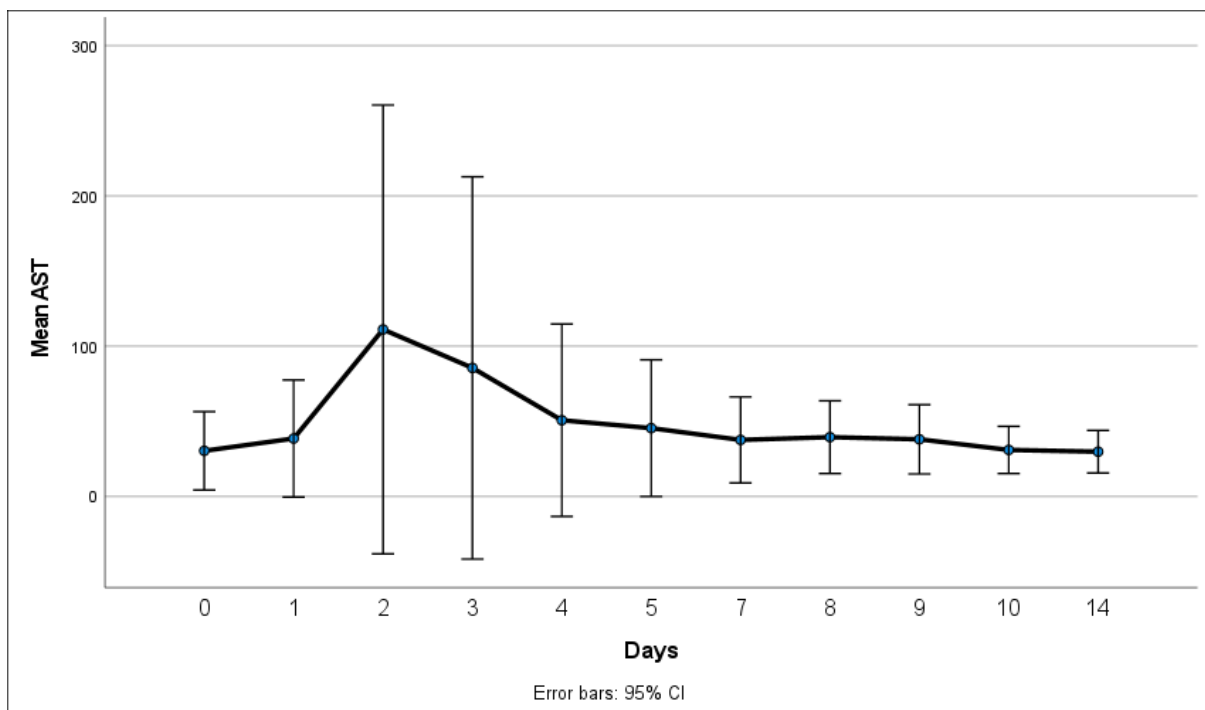


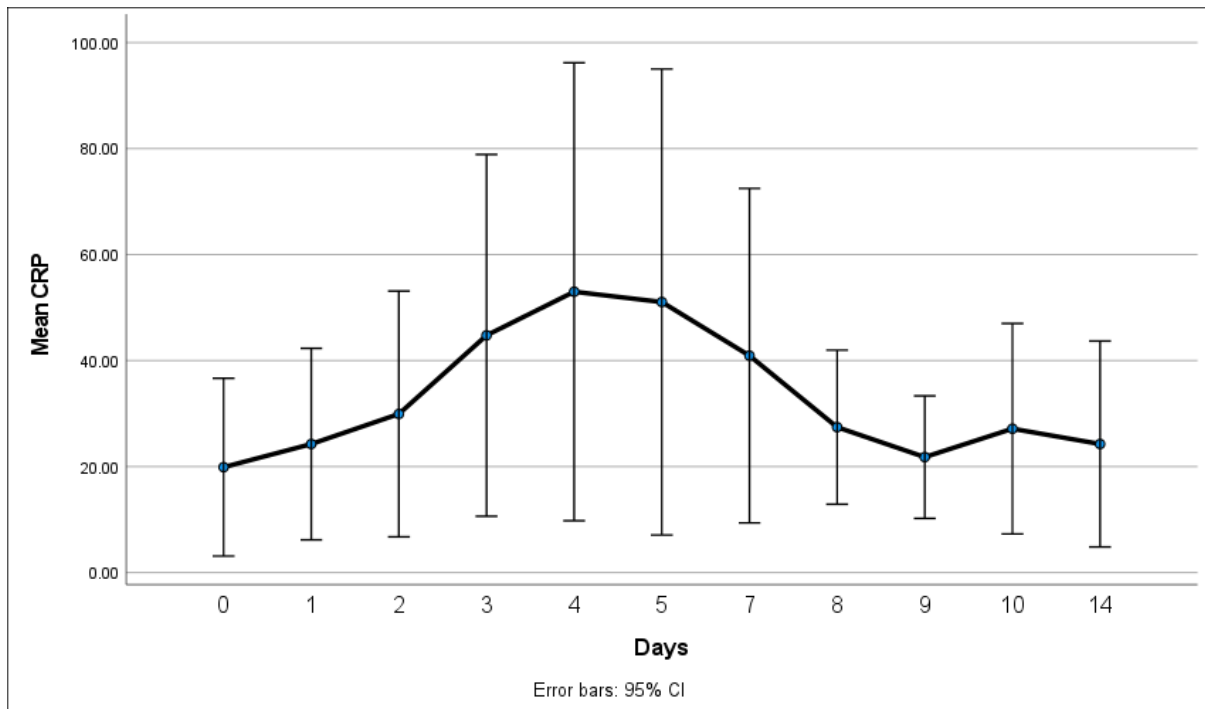
Profile Plots BC2 - ALT



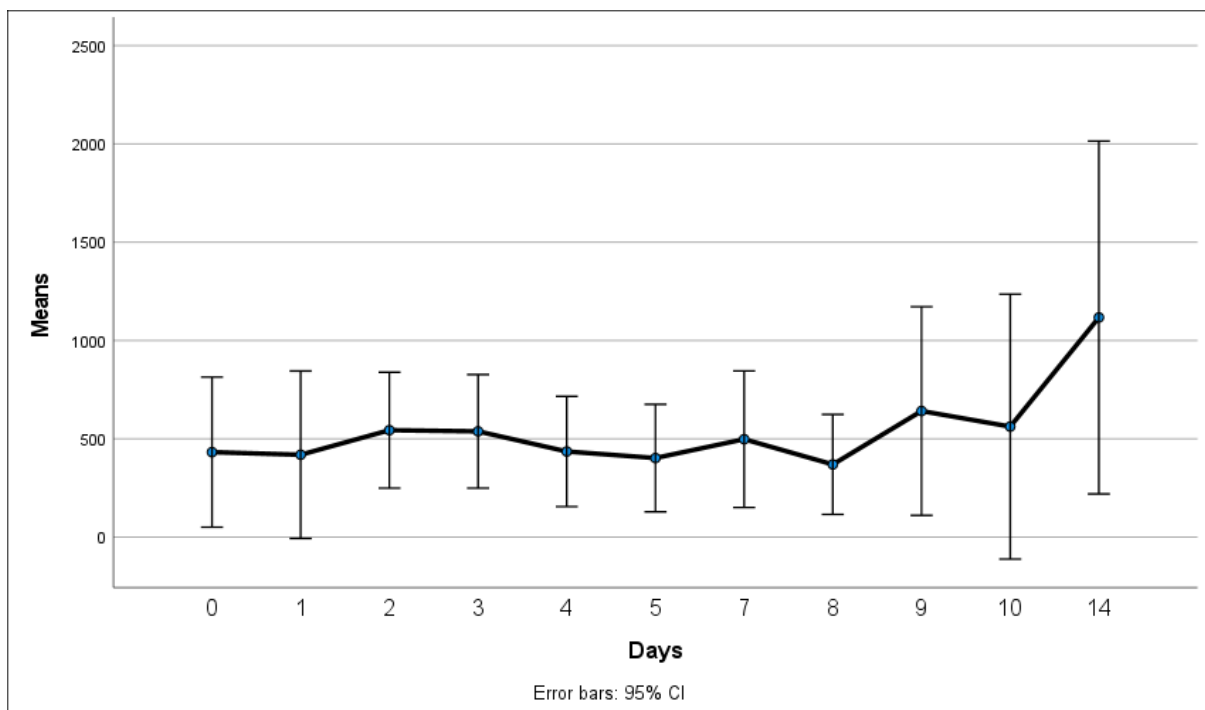
Profile Plots BC3 - AST



Profile Plots BC10 - CRP



Profile Plots CG5 - D Dimer



Supplementary Table 1 - S2 – oxygen saturation (abnormal result)

Only 1 patient had abnormal oxygen saturation.

	N	Minimum	Maximum	N*
V0NEWS2	12	0	1	1
V1NEWS2	12	0	2	7
V2NEWS2	12	0	3	5
V3NEWS2	12	0	3	5
V4NEWS2	12	0	2	5
V5NEWS2	12	0	2	5
V6NEWS2	12	0	2	9
V7NEWS2	12	0	2	7
V8NEWS2	12	0	2	7
V9NEWS2	11	0	2	6
V10NEWS2	12	0	0	0
V14NEWS2	12	0	1	1
Valid N (listwise)	11			

**number of patients with S>0 (abnormal result)*

Supplementary Table 2 - NEWS score

Case Summaries^a

	Subject.ID	V0 NEWSR	V1 NEWSR	V10 NEWSR	V14 NEWSR
1	01-01	1	1	3	2
2	01-02	1	0	0	0
3	01-03	1	1	1	1
4	01-04	2	1	NA	1
5	01-05	1	1	NA	1
6	01-06	3	4	NA	2
7	01-07	2	2	NA	1
8	01-08	3	2	2	4
9	01-09	0	1	NA	0
10	01-10	3	2	0	0
11	01-11	3	3	1	4
12	01-12	2	4	3	0